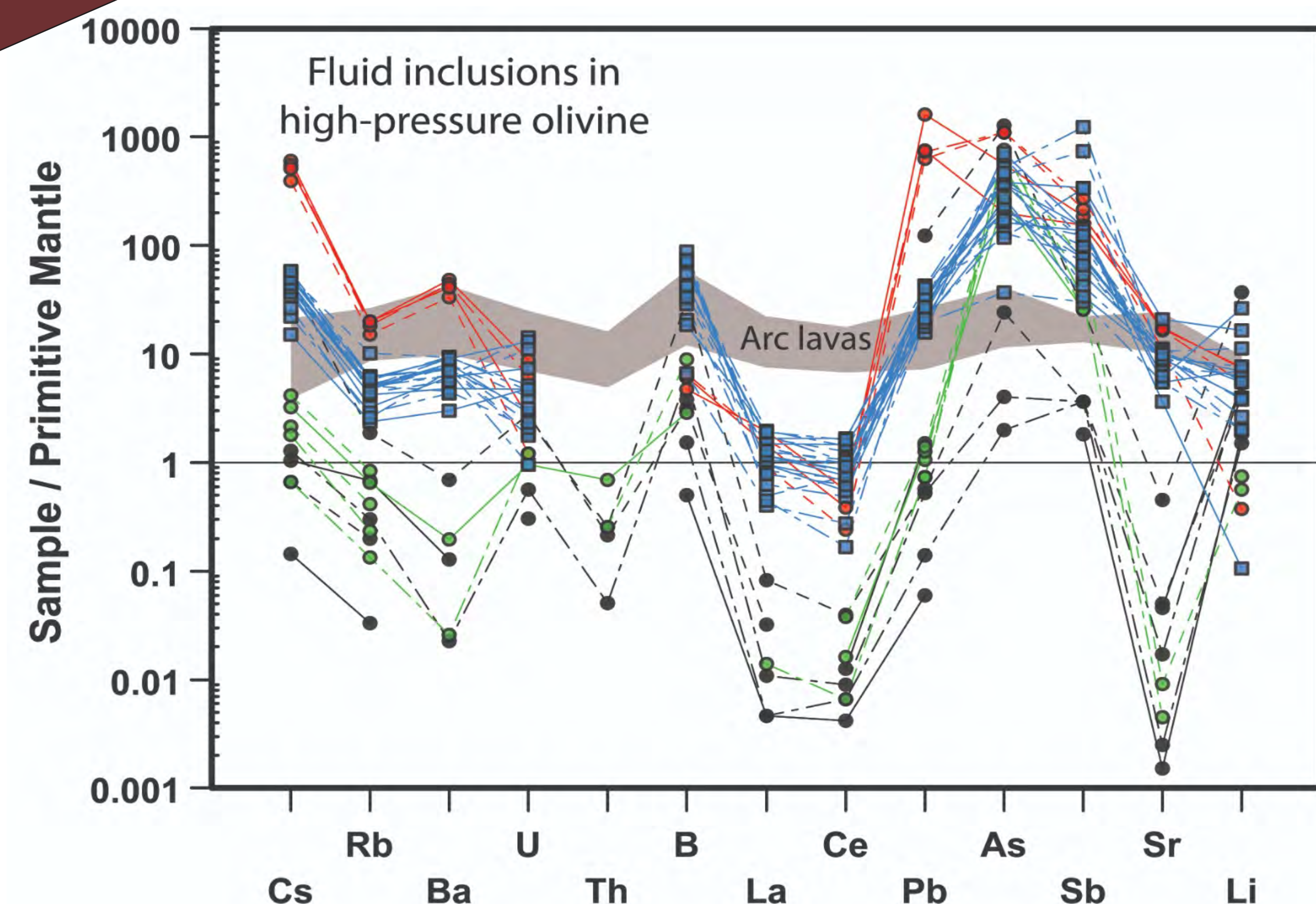
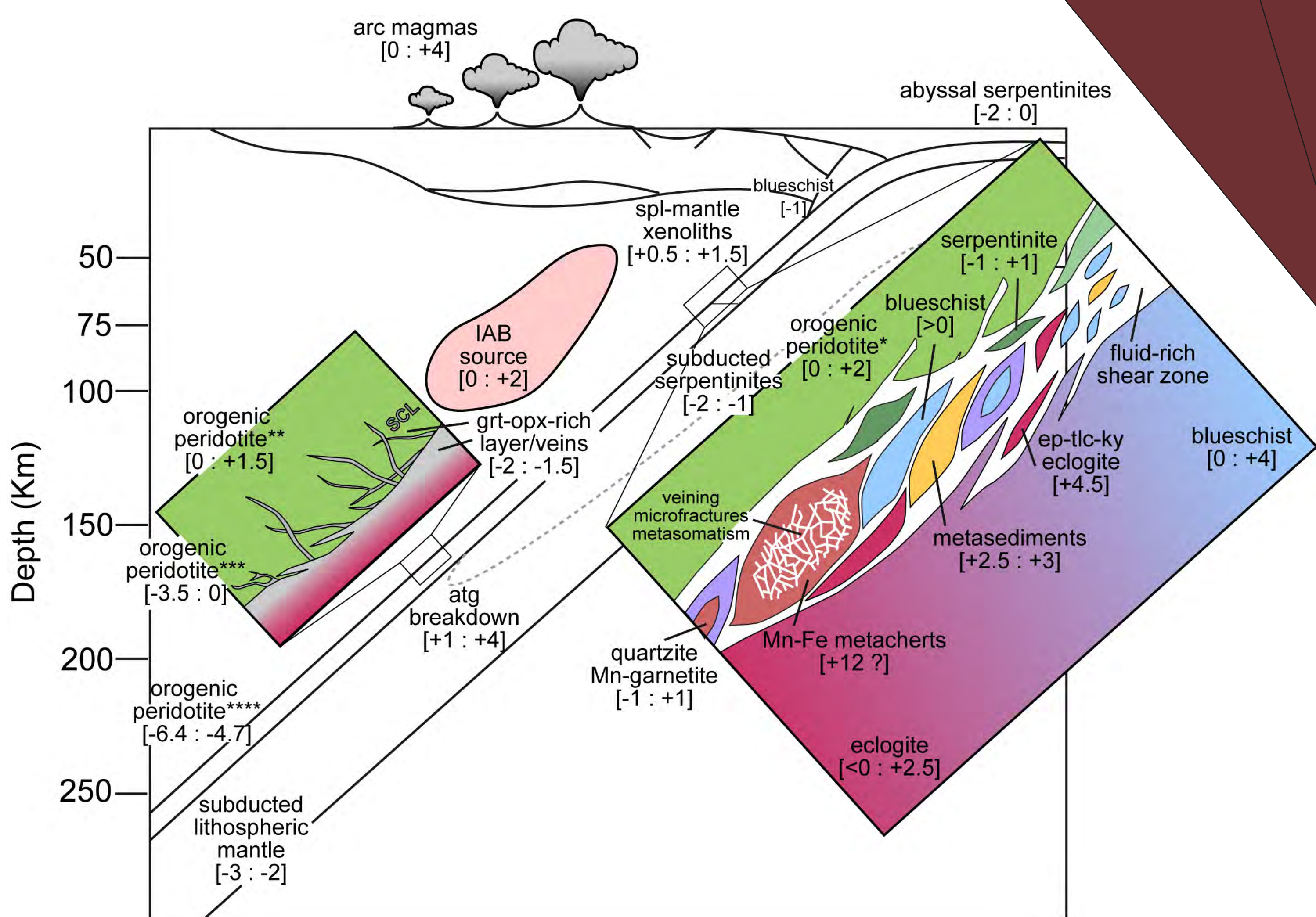
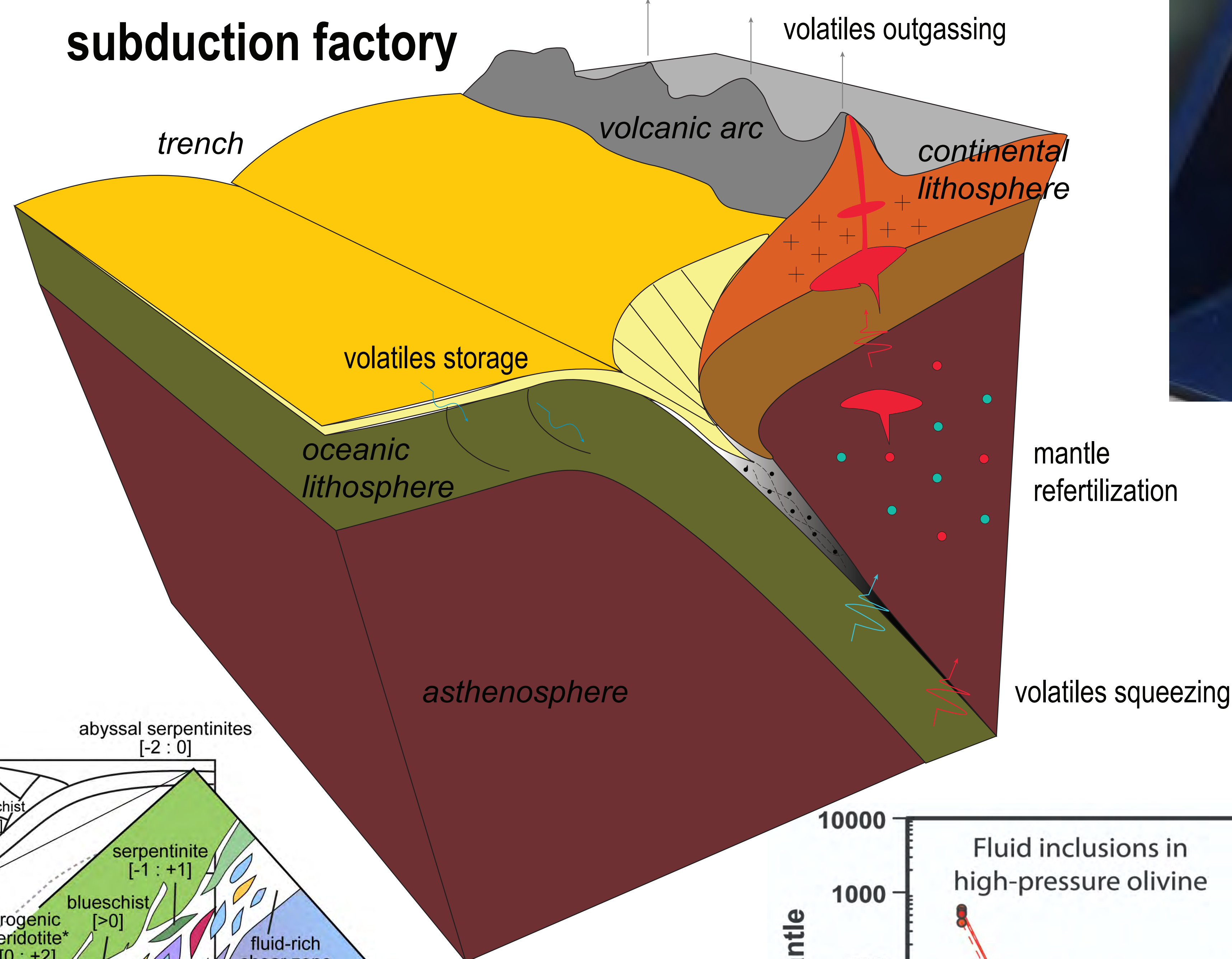
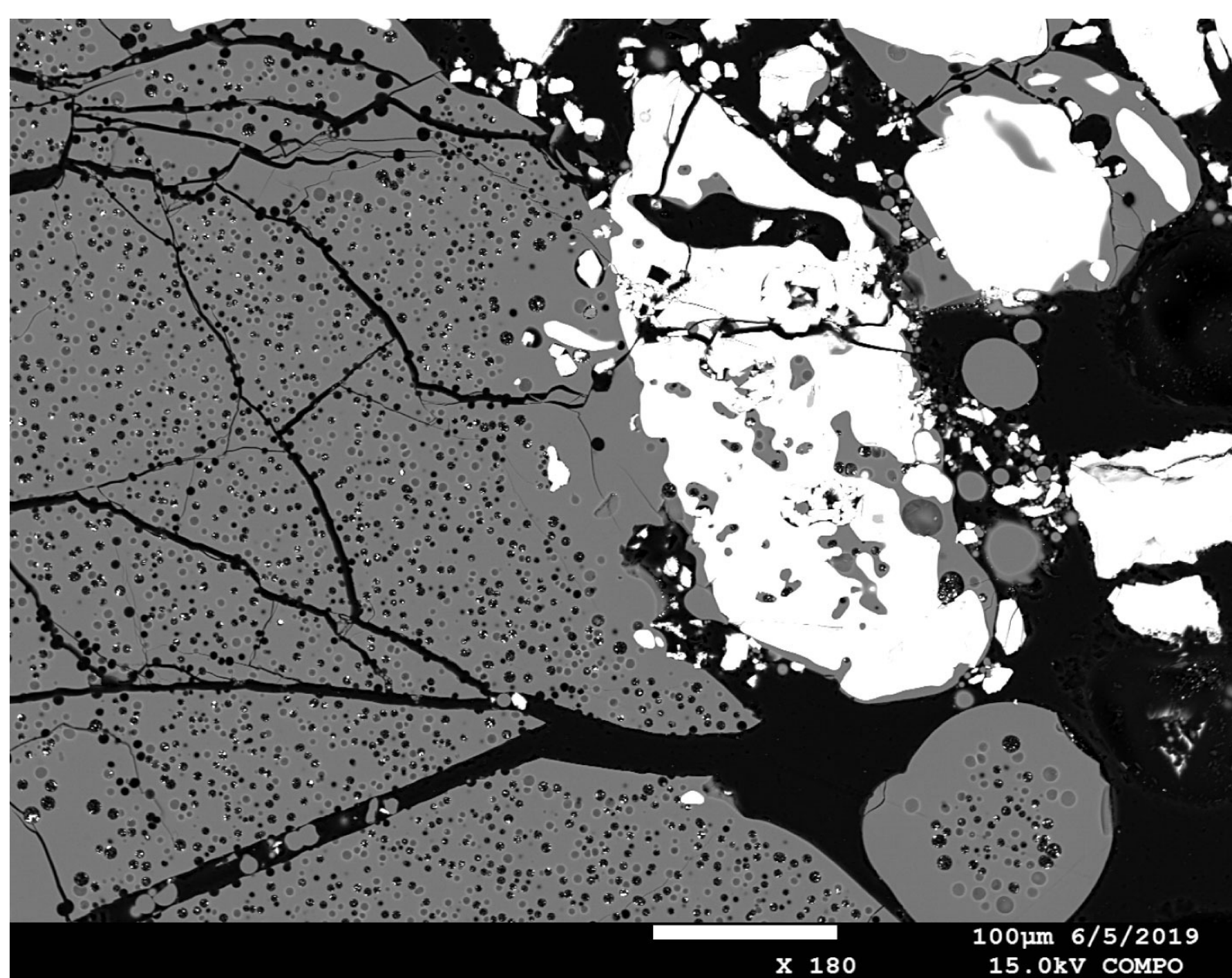
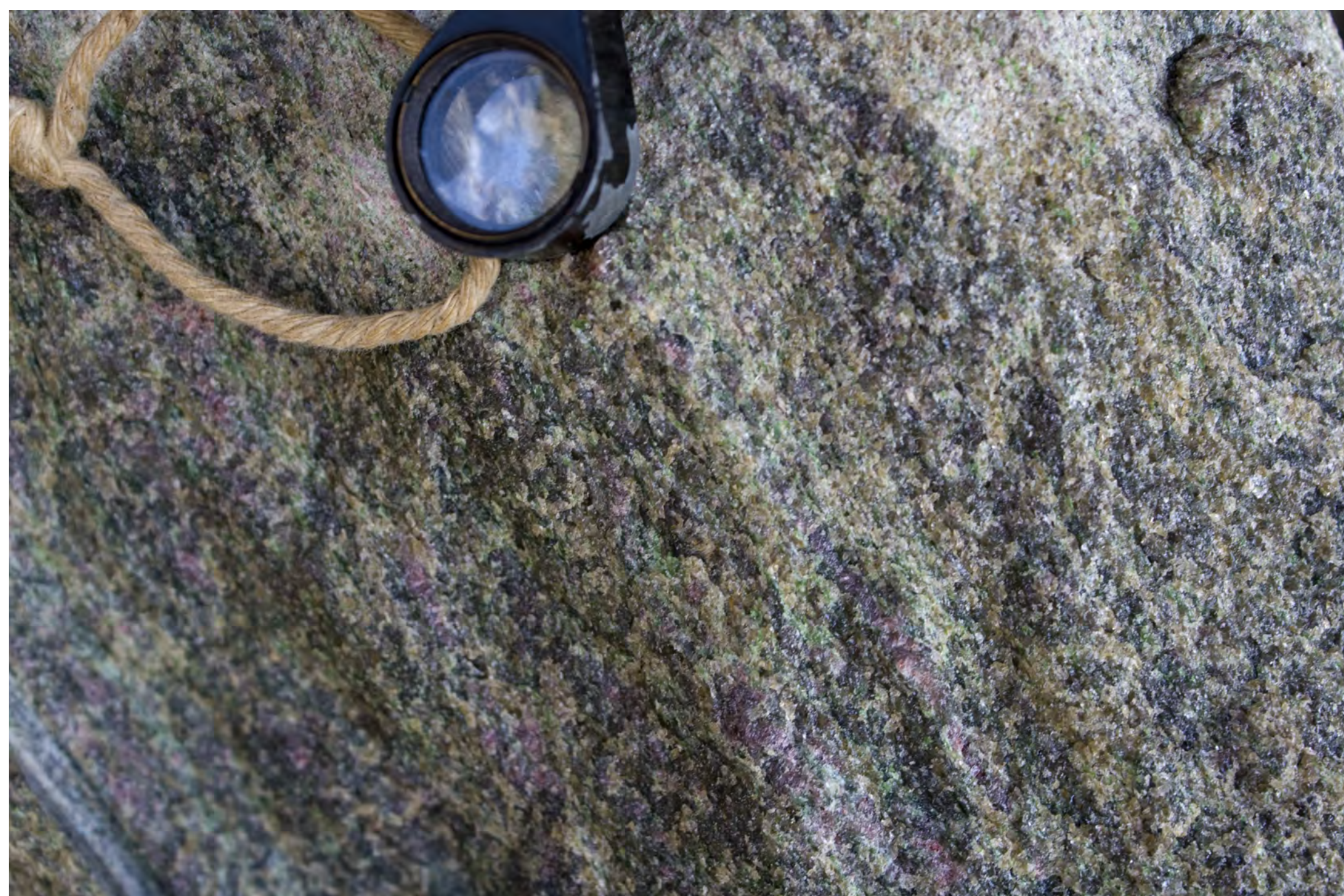


A journey into the subduction factory: slab-derived melts/fluids and their interaction with mantle



Keynote speaker **Dr. MARION LOUVEL (University of Münster)**

“In-situ DAC experiments: Windows into the composition and properties of slab-derived fluids and melts”

29 august - 2 September 2021
<https://emc2020.ptmin.eu/>