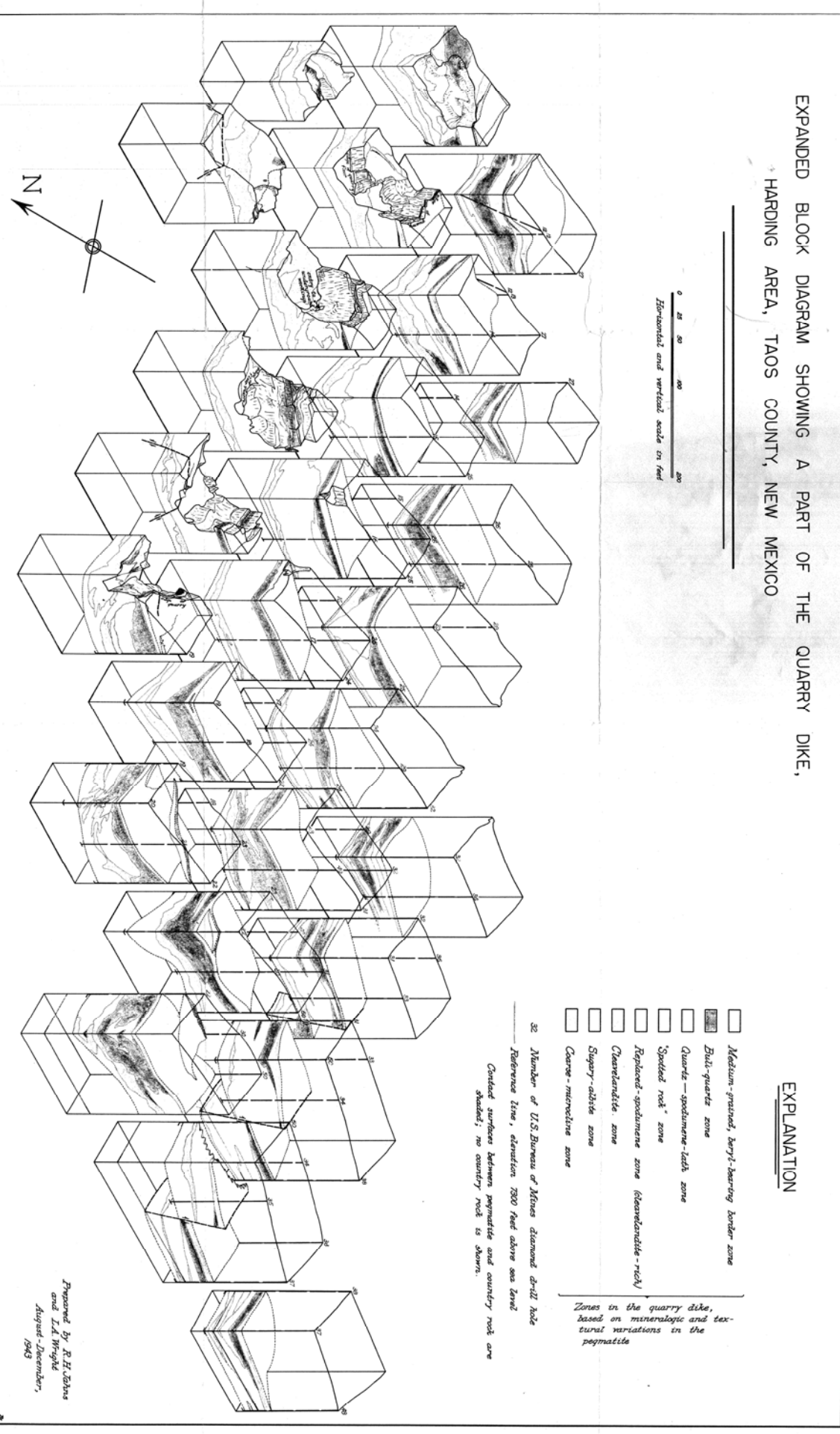
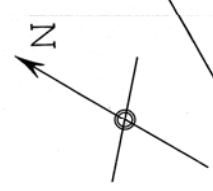


EXPANDED BLOCK DIAGRAM SHOWING A PART OF THE QUARRY DIKE,
HARDING AREA, TAOS COUNTY, NEW MEXICO

EXPLANATION



- Medium-grained, beryl-bearing border zone
- Beryl-quartz zone
- Quartz - spodumene - kals zone
- Spotted rock zone
- Replaced - spodumene zone (clearanadite - rock)
- Clearanadite zone
- Sugary - albite zone
- Coarse - microcline zone

22 Number of U.S. Bureau of Mines diamond drill hole
Reference line, elevation 7300 feet above sea level
Contact surface between pegmatite and country rock are shaded; no country rock is shown.

Zones in the quarry dike, based on mineralogic and textural variations in the pegmatite

Prepared by R.H. Johns
and L.A. Wright
August-December,
1943